



COMPANY PROFILE

2024

ZION INTEGRATED INVESTMENT CC



dkandjiill@gmail.com/
kaymurangi@gmail.com



0813242552/
0813171694



64 Dr.Kaima Riruako Street

TABLE OF CONTENTS



1	COMPANY OVERVIEW
3	INDUSTRY BACKGROUND
4	MISSION AND VISION
4	CLIENT COMMITMENT STATEMENT
5	OUR SERVICES
6	OUR CLIENTS AND GEOGRAPHIC REACH
7	PARTNER WITH REPUTABLE DRILLERS
7	SIGNIFICANT GEOLOGICAL FORMATIONS IN NAMIBIA HYDROLOGY
8	OUR AMAZING TEAM
9	REACHING GROUNDWATER
10	OUR WORK

COMPANY OVERVIEW



BRIEF HISTORY OF THE COMPANY

Zion Integrated Investment CC was founded with a vision to provide sustainable water solutions to communities and industries in Namibia. Over the years, we have grown to become a leader in water resource management, known for our expertise, reliability, and commitment to quality.

Our journey began with a small team of dedicated professionals and has expanded to include a wide range of services that cater to various water needs across the country.

ZION INTEGRATED INVESTMENT CC

Comprehensive Services

Expert Team

Wide Reach

Strong Partnerships

Client Focused

INDUSTRY BACKGROUND



POST- INDEPENDENCE ERA

After Namibia gained independence in 1990, the country faced significant challenges in providing reliable water sources, particularly in rural and arid regions. Access to clean and sufficient water was limited, and many communities relied on traditional methods that were often inefficient and unsustainable. The need for advanced water sighting and borehole drilling technologies became critical.

TECHNOLOGICAL ADVANCEMENTS AND CURRENT APPLICATIONS

Over the years, Namibia has seen significant advancements in water sighting and borehole drilling technologies. Geophysical survey methods like electrical resistivity tomography (ERT) and magnetotellurics (MT) have revolutionized groundwater resource identification, enabling accurate detection of underground water sources and reducing the risk of drilling dry wells.

Modern drilling rigs and techniques have enhanced efficiency and depth capabilities, making boreholes essential for domestic, agricultural, and industrial water supplies across Namibia. The implementation of solar-powered pumps and advanced water management systems ensures sustainable and cost-effective water extraction.



Electrical Resistivity Tomography (ERT)

MISSION AND VISION



MISSION



To provide innovative and sustainable water solutions that enhance the quality of life for communities and support economic growth in Namibia.

VISION



To be the leading provider of water resource management services in Namibia, recognized for our expertise, reliability, and commitment to excellence.

CLIENT COMMITMENT STATEMENT



At Zion Integrated Investment CC, our clients are our top priority. We are committed to delivering high-quality services that meet their unique needs and exceed their expectations.

Our team of professionals is dedicated to ensuring the success of every project, from initial consultation to final implementation.

100%



WATER SIGHTING AND SURVEY RECORD

100%



DRILLING SUCCESS RATE

OUR SERVICES



We offer services including water sighting and surveys, borehole drilling, installation and commissioning, borehole investigation and rehabilitation, maintenance contracts, pump and yield testing, submersible pump supply and installation, solar installations, water tanks and dams, and comprehensive farm project management.



WATER SIGHTING AND SURVEY

We utilize advanced geophysical methods to accurately identify potential groundwater sources. Our surveys ensure precise and sustainable water extraction.



BOREHOLE INSTALLATION & COMMISSIONING

Our team ensures the proper installation and commissioning of boreholes, including pumps and necessary infrastructure, for optimal operation.



PUMP TESTING AND YIELD TESTING

We conduct performance and yield tests on pumps to ensure they meet required standards and optimize water extraction.



SOLAR INSTALLATIONS

We design and implement solar-powered water systems, providing environmentally friendly and cost-effective solutions.



BOREHOLE DRILLING

We provide efficient and reliable borehole drilling services, essential for accessing underground water in Namibia's arid conditions.



BOREHOLE REHABILITATION AND INSPECTION

Our rehabilitation and inspection services maintain boreholes in good working condition through cleaning, repairing, and upgrading.



SUBMERSIBLE PUMP SUPPLY

We supply and install high-quality submersible pumps designed for efficient and reliable operation in various conditions.



WATER TANKS

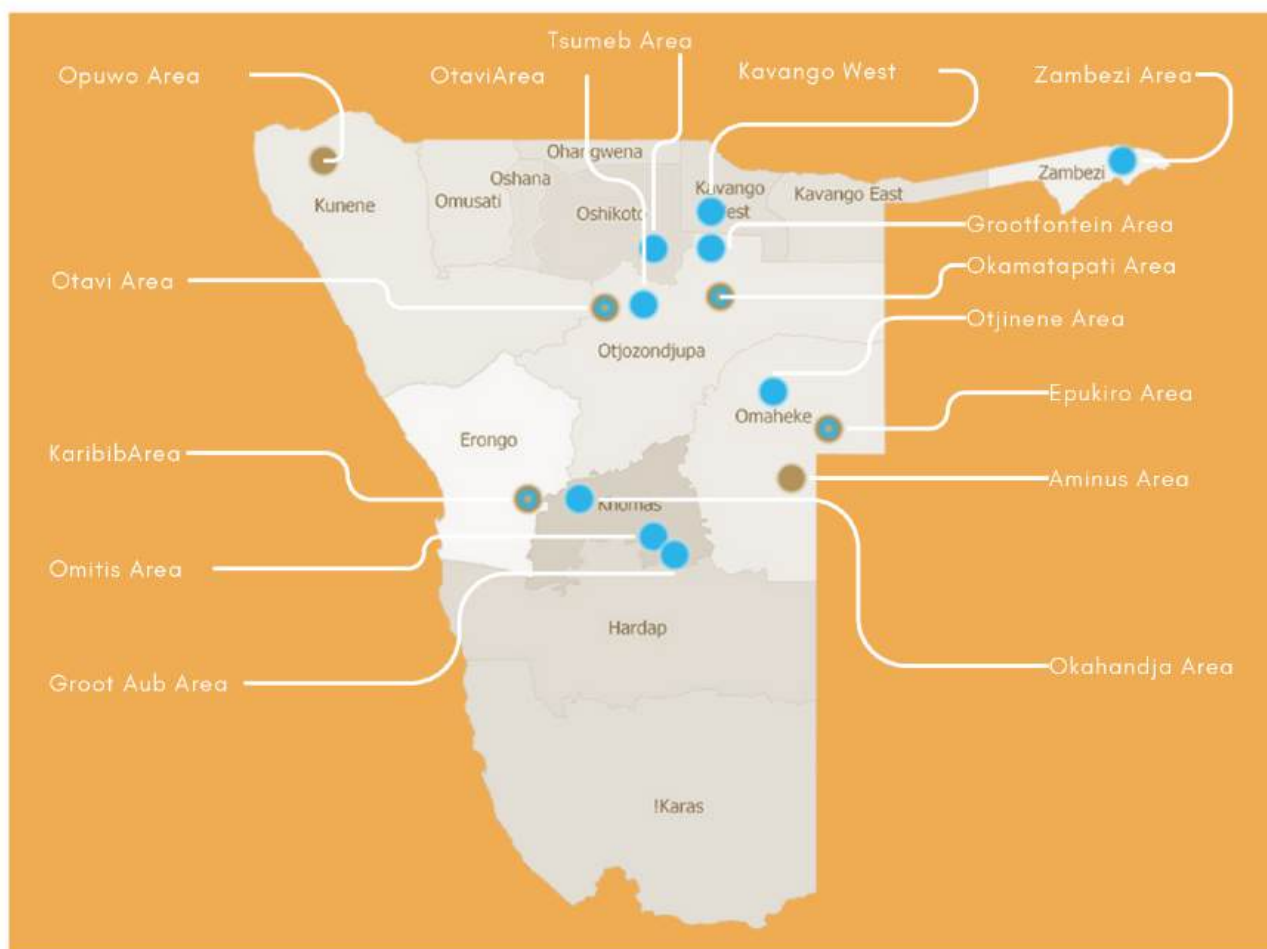
We supply and install durable water tanks for different capacities and applications, ensuring reliable water storage.

OUR CLIENTS AND GEOGRAPHIC REACH

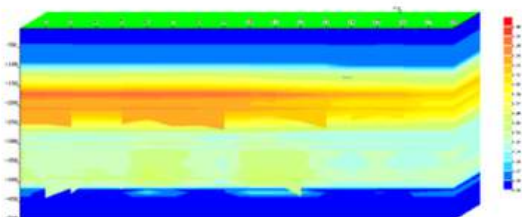


We serve a diverse range of clients across various regions of Namibia, including rural communities, agricultural enterprises, industrial companies, government agencies, and non-governmental organizations. Our services extend to multiple regions such as Erongo, Otjozondjupa, Omaheke, Khomas, Kavango West, Oshikoto, Kunene, and Zambezi, where we enhance water supply systems for communities and industries, support agricultural projects with advanced water management solutions, and address rural and peri-urban water needs.

Currently, we have successfully reached >50% of Namibia's regions with our water solutions. We are dedicated to expanding our services to cover the entire country, ensuring that every community and enterprise has access to sustainable and reliable water resources.

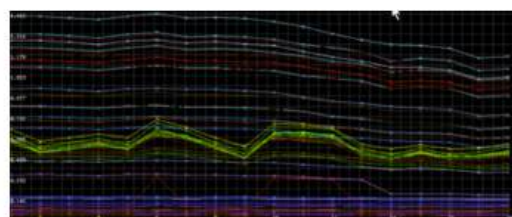


Drilling Survey Pump & Solar Installation



3D Visualization

Generate high-resolution 3D models of subsurface water structures for comprehensive analysis and presentations.



Deep Detection & Instant Reporting

Locate groundwater up to 500 meters deep with unmatched accuracy.

PARTNER WITH REPUTABLE DRILLERS



At Zion Integrated Investment CC, we partner with reputable drilling companies, including Helios Drilling and GW Drilling, to complete large-scale projects efficiently. These collaborations ensure we utilize the latest technologies and best practices, allowing us to deliver precise and reliable water solutions across Namibia. Working together, we uphold strict safety and quality standards, enhancing our capacity to meet diverse client needs and achieve excellence in all our projects.



OUR AMAZING TEAM



DONAVAN KANDJII

Geologist

A skilled geologist, brings extensive expertise in groundwater resource identification. His proficiency in geophysical survey techniques, including ERT and MT, enhances our ability to accurately locate and assess underground water sources. Donovan's knowledge ensures precision in water sighting and surveying, significantly improving the success rate of our borehole drilling projects.



KAY KANDJII

Business Manager

Kay Murangi-Kandjii oversees the day-to-day management of Zion Integrated Investment CC, ensuring every query is promptly attended to and surveys are concluded timely. With a background in business management, she ensures efficient operations and excellent client service.

SIGNIFICANT GEOLOGICAL FORMATIONS IN NAMIBIA HYDROLOGY



UNDERSTANDING THESE FORMATIONS HELPS IN OPTIMIZING WATER RESOURCE MANAGEMENT, ENSURING SUSTAINABLE AND RELIABLE WATER SUPPLIES FOR VARIOUS USES ACROSS NAMIBIA.

Damara Belt

- Formed from Congo and Kalahari craton collision; contains fractured rock aquifers supporting mineral-rich aquifers.

Swakop Group

- Part of Damara Belt with sedimentary and volcanic rocks; hosts aquifers with shales, limestones, and dolomites.

Kalahari Group

- Series of sedimentary deposits including sand, gravel, clay, and calcrete; extensive aquifers provide groundwater for agriculture, wildlife, and settlements.

Stampriet Artesian Basin

- Located in southeastern Namibia; known for high-quality artesian water, crucial for agriculture.

Ohangwena II Aquifer

- Transboundary aquifer extending into Angola; crucial water source for densely populated northern Namibia.

Oshivelo Aquifer

- Situated in the Oshikoto Region; provides water resources for agriculture and local communities.

Kuiseb River Aquifer

- Found in the central Namib Desert; supports water needs in Walvis Bay and surrounding coastal areas.

Caprivi Strip Aquifers

- Aquifers in northeastern Namibia; vital for local communities, wildlife, and ecosystems in the Zambezi Region.

Grootfontein Aquifer

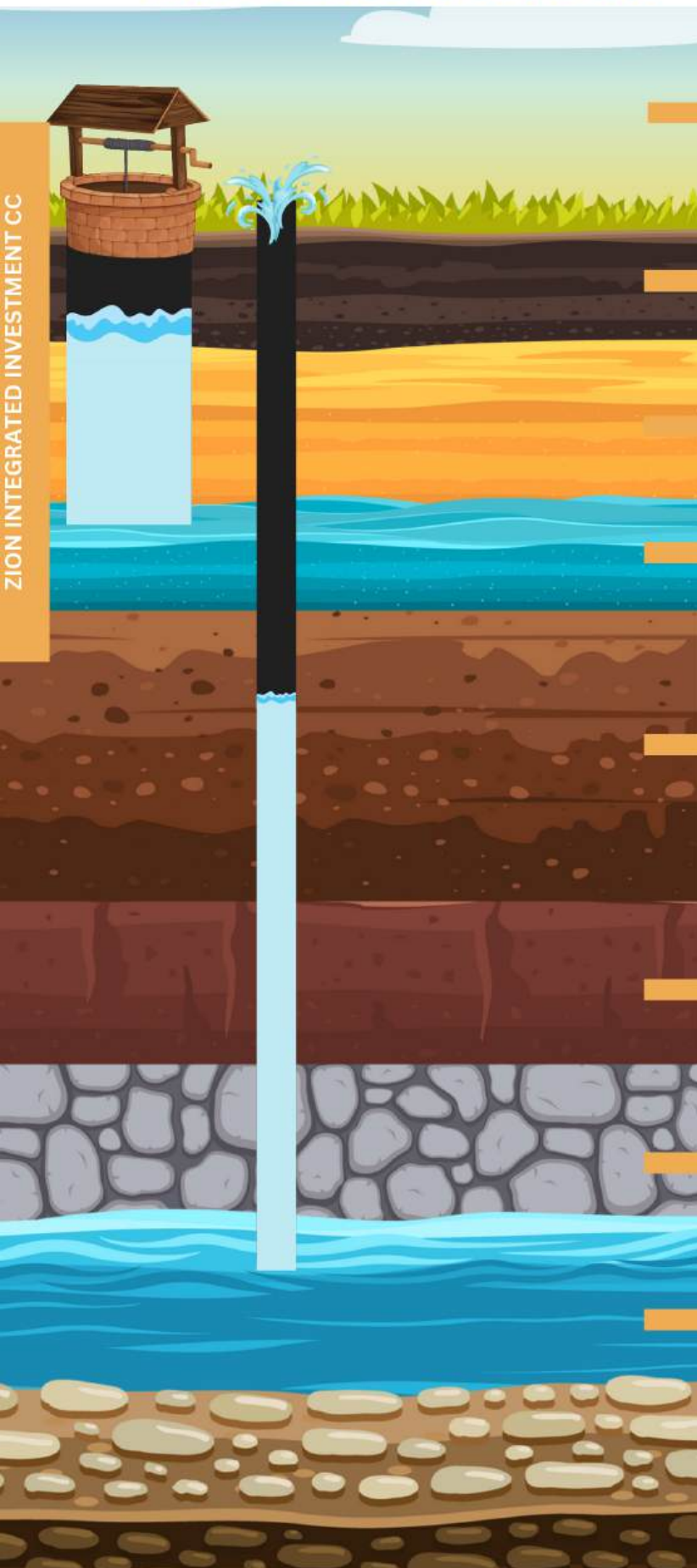
- Found in the Otjozondjupa Region; essential for farming and urban water supply.

Karst Aquifers

- Found in limestone regions, especially in the Otavi Mountainland; known for high permeability and significant water storage capacity, crucial for agriculture and municipal use.



REACHING GROUNDWATER



Groundwater refers to the water that exists beneath the Earth's surface in underground aquifers or porous rock formations. It is one of the Earth's most important natural resources and plays a vital role in supporting various ecosystems.

The topmost layer is the soil, which consists of weathered rock, organic matter, and minerals.

Regolith consists of broken rocks, minerals, and sediments, which can act as a storage reservoir for water.

An aquifer is a layer of permeable rock or sediment that can store and transmit significant amounts of groundwater.

Silt is a sediment composed of fine particles larger than clay but smaller than sand. While silt has higher permeability than clay, it can still act as a confining layer, particularly if it forms continuous or thick deposits.

Clay is a fine-grained soil type with very small particles. It has low permeability, which makes it an effective confining layer.

Certain types of dense bedrock, such as granite or basalt, can act as effective confining layers.

An artesian aquifer occurs when water is confined in a geological formation between two impermeable layers.

OUR WORK



ZION INTEGRATED INVESTMENT CC



SURVEY @WORK



INSTALLTION@WORK



TANK SETUP@WORK



GREEN@WOR



BOREHOLE REHABILITATION@WORK



BOREHOLE CLEANING@WORK



INSPECTION@WORK



COMPLETE SOLAR INSTALLTION@WORK



HOW TO REACH US



WWW.ZION-NAM.COM



0813242552/0813171694



DKANDJII11@GMAIL.COM/KAYMURANGI@GMAIL.COM



64 DR.KUAIMA RIRUAKO STREET